



The Avenue, London

£2,350 Per Month

 2
  1
  0
  D

# The Avenue, London

£2,350 Per Month

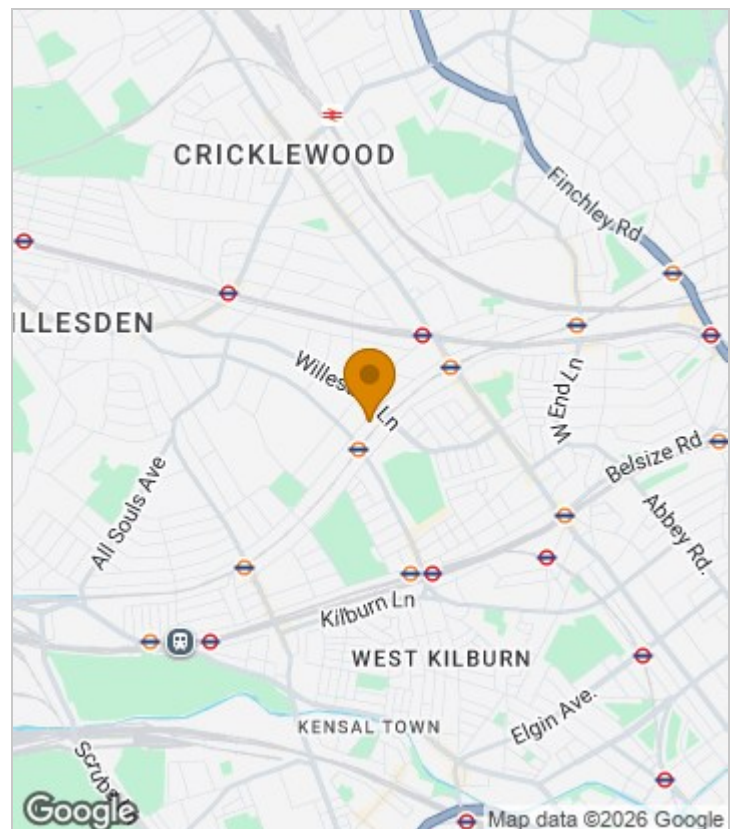


## Summary Description

Lovely two double bedroom top floor flat is available from 18th of March. Property features two really good size bedrooms, master bedroom has private WC, both bedrooms comes with great storage. Other features are large and separate bright living room, large in kitchen, modern bathroom. Flat offers 840 sq/ ft space, big windows allows a lot of light in therefore it's bright flat. Suitable for families or up to 2 shares only or a family. Property is located just around the corner from Brondesbury Park station, and just at the end of the road there is another Brondesbury overground station as well as Kilburn underground station. Easy access to Salusbury road and Queens Park to explore selection of great bars, and restaurants, easy access to shops.

One week's holding deposit will be required, 5 weeks damage deposit required, EPC rating D, council tax band D

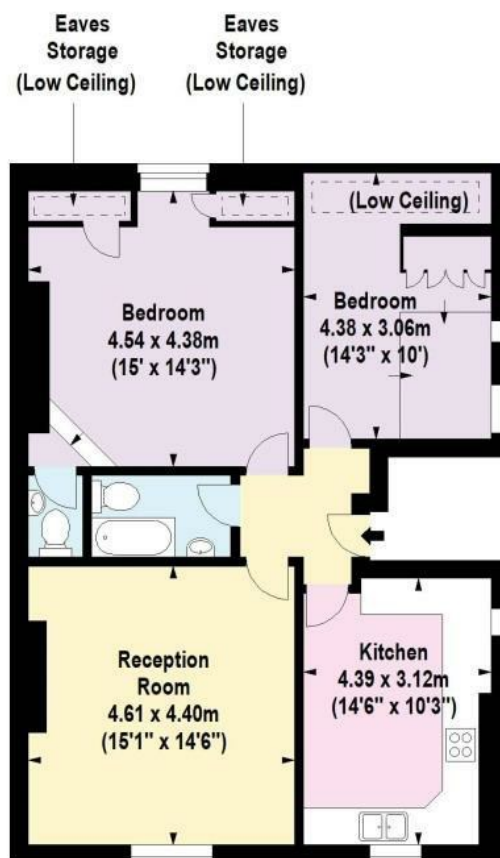
## Area Map







## Floor Plan



Second Floor



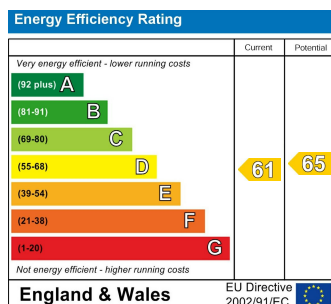
For Identification Purposes Only. Not To Scale. © www.totalvista.uk 2022

The Avenue, NW6

Approx. Gross Internal Area  
78.04 Sq M - 840 Sq Ft



## Energy Efficiency Graph



## Viewing

Please contact our Lettings QP Office on 0207 604 4040 if you wish to arrange a viewing appointment for this property or require further information.

- Top floor flat
- Modern bathroom
- Redecorated not long time ago
- Amazing storage
- Available from 8th of September
- Two double bedrooms
- An additional WC
- Separate large kitchen
- Close to transport links

For further information contact:

Lettings QP, 2a Brondesbury Road, London, NW6 6AS

Tel: 0207 604 4040 Email: [info@jorgensenturner.com](mailto:info@jorgensenturner.com) <https://www.jorgensenturner.com/>

## Disclaimer

These particulars, whilst believed to be accurate are set out as a general outline only for guidance and do not constitute any part of an offer or contract. Intending purchasers should not rely on them as statements of representation of fact, but must satisfy themselves by inspection or otherwise as to their accuracy. No person in this firm's employment has the authority to make or give any representation or warranty in respect of the property.